



Advanced Security Solutions

CMS

Remote Viewing Guide


Operation and Control




Maintenance and Management



Login










☐ Enable Auto-login


Login Cancel


CMS


View


  Search... 


  Default View

 1-Screen

 4-Screen

 9-Screen

 16-Screen

 Custom View

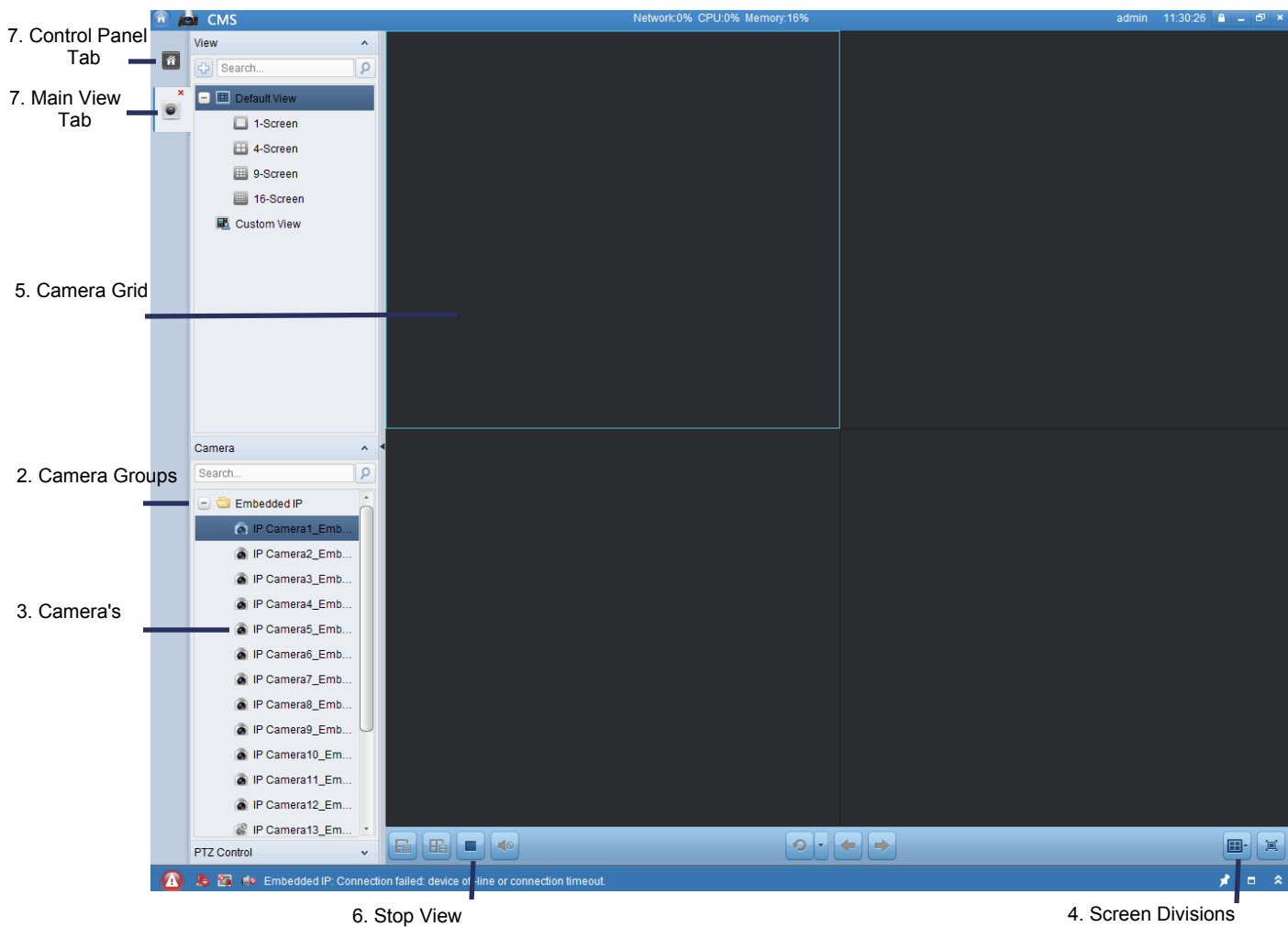
Camera

6. Closing Tabs

Main View - Live View Operation

Steps:

1. Click on Main View from the CMS Control Panel Screen.
2. From the camera groups window find the store of interest.
3. Drag and drop camera's from within the store folder into the camera grid squares.
4. Screen division can be changed to view more cameras.
5. Double click a camera grid to enlarge, Double click again to return to regular screen division.
6. Click stop button to stop viewing camera's.
7. Click the red x to close tabs or click between other open tabs eg. Control panel.



Remote Playback Operation

Steps:

1. Click on Remote Playback from the CMS Control Panel Screen.
2. From the camera groups window find the store of interest.
3. Drag and drop camera's from within the store folder into the camera grid squares.
4. Screen division can be changed to view more cameras.
5. Double click a camera grid to enlarge, Double click again to return to regular screen division.
6. Click on Red Date/Time to bring up calander. Select Date/Time and click OK.
7. Red bars on time bar indicate motion.

2. Camera Groups

3. Camera's

5. Camera Grid

7. Motion Time Bar

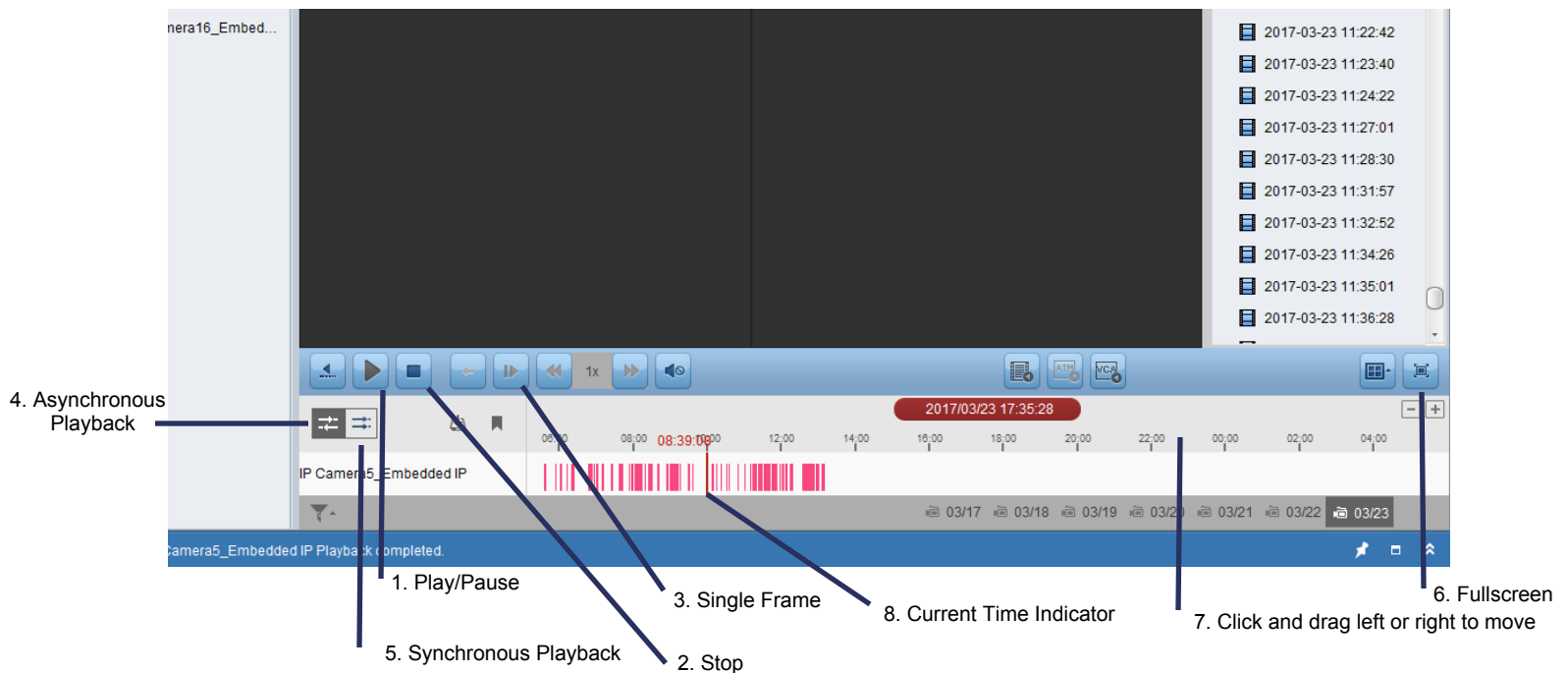
6. Calender Date/Time

4. Screen Divisions

The screenshot displays the CMS Remote Playback interface. On the left, a 'Camera Groups' panel shows a list of cameras under the 'Embedded IP' folder. A list of 16 cameras is visible, with 'IP Camera5_Embedded IP' selected. The main area is divided into four windows (Window01 to Window04). Window01 shows a live feed of a warehouse interior. The other windows are currently black. At the bottom, a 'Motion Time Bar' shows a timeline with red vertical bars indicating motion events. A calendar pop-up is visible, showing the month of March 2017, with the date 10:07:23 selected. A list of events on the right side of the interface shows timestamps for various events, with the most recent event being '2017-03-23 10:07:27'.

Additional Functions:

1. Play/Pause
2. Stop selected camera *Click camera in camera grid to select*
3. Proceed by Single Frame *Assists with getting the best image during an event*
4. Asynchronous Playback *Camera's can play different times*
5. Synchronous Playback *Camera's all play same time*
6. Fullscreen *Escape to exit fullscreen*
7. Left click and drag on on time above motion time bar to move current time for playback.
8. Red line indicates current time set to playback.

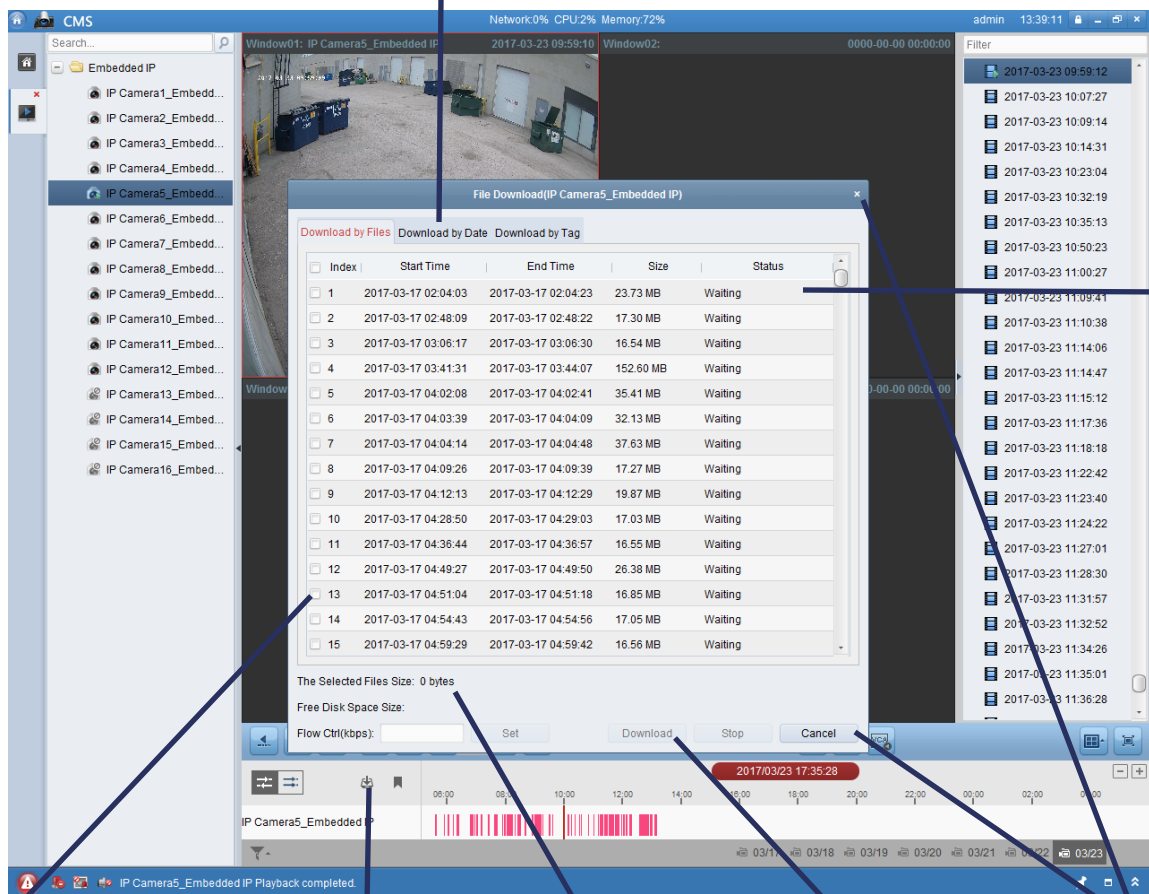


Remote Download

Steps:

1. Click Download button
2. Click File Checkbox for all files in Date/Time range required
- 2A. Alternately Click Download by Date Tab to select a start and end Date/Time. *Select step 2 or 2A not both*
3. Selected file size is shown.
4. Click Download to begin process.
5. Status will change to Downloading and Downloading Completed.
6. Click x or cancel to close screens.

2A. Download by Date Tab



5. Downloading Status

2. File Checkbox

1. Download Button

3. Selected Files Size

4. Begin Download

6. Cancel/Close

Austin VSPlayer

Additional Functions:

1. Video Player Window
2. Playlist Selection
3. Timebar Slider
4. Play/Pause
5. Stop
6. Slow Forward/Fast Forward
7. Frame by Frame
8. Capture *Grab a still image*
9. Partial Zoom *use mouse scroll to zoom in and out*
10. Video Player Settings
11. Video Player Menu
12. Minimize
13. Fullscreen
14. Close
15. Additional Menu *Merge/Convert*

