



i³Server, i³Remote & PACDM™
End User Manual

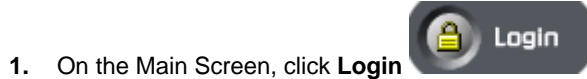


Table of Contents

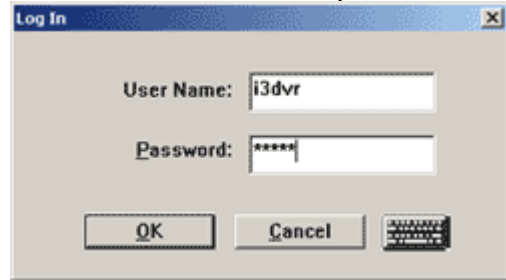
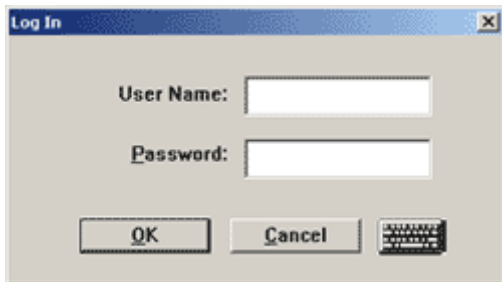
| | |
|---|-----------|
| i3SERVER - LOGGING IN/OUT | 2 |
| i3SERVER - MAIN SCREEN FUNCTIONS | 2 |
| i3SERVER - SEARCH AND PLAYBACK | 4 |
| Time Panel | 4 |
| Collapse the Time panel | 5 |
| Timeline Bar | 5 |
| 24-hour Timeline | 5 |
| Camera Activation Buttons | 6 |
| Camera Scroll Bar | 6 |
| Timeline Marker | 6 |
| Video Recording Bars and Types of Recording | 6 |
| Playback Control Panel | 7 |
| Tools Panel | 7 |
| Video recording playback | 8 |
| Image Zoom In/Zoom Out | 8 |
| Using the Bookmark | 9 |
| Panorama function | 9 |
| i3SERVER - QUICK BACKUP | 10 |
| Multi-CD functionality | 11 |
| i3REMOTE | 12 |
| PAC DATA MANAGER END USER GUIDE | 13 |
| Hardware and software pre-requisites for installation | 13 |
| PACDM™ Quick Item Search | 13 |
| Quick Item Search Results | 14 |
| i3 ONLINE TRAINING | 15 |

i³Server - Logging In/Out

To log into the i³ Server, do the following:



1. On the Main Screen, click **Login**
2. The **Log In** window will appear on the screen
3. If logging in for the first time, enter **i3dvr** for User Name and **i3dvr** for Password. Or log in with the name and password assigned by system administrator. Use the virtual keyboard if necessary.

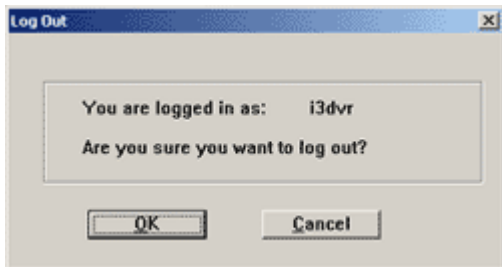


4. Click **OK** or press **Enter** to continue

To log out of the i³ Server, do the following:



1. Click **Logout**
2. The confirmation window will be displayed. Click **OK** to log out.



i³Server - Main Screen functions



Login/Logout – in order to access the i³Server Setup, search or view the cameras or access PACDM™ the user must first log in.

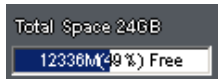
Note: only the users logged-in as the master users can access the Desktop.



Search – displays the i³ Server **Search** window, which permits camera playback and search, image editing and printing, file backup by time/date/camera, object search, etc.



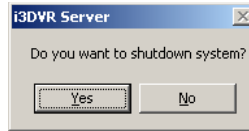
Panic – the Panic button acts as an Active Sensor Backup. When Panic is clicked or the sensor is activated the system will backup the 5 prior minutes of encrypted video onto a CD-R. (if available).



Total Space (Storage/Hard Drive Meter) – Displays the amount of remaining free hard drive space available for video recording. When no empty space is remaining, i³Server goes into the overwrite mode and the word Recycling is displayed on the Total Space meter.



Power – when **Power** is clicked, the DVMS shuts down.



Camera



Camera panel indicates the DVMS recording activity. Camera numbers highlighted in red represent currently recording cameras.

Sensor and Control



The Sensor/Control panel activates selected controls and displays sensor status. Selected controls and triggered sensors are highlighted in red on the Sensor/Control panel.

Screen Division - The Screen Division buttons allow customizing the main screen appearance. When a specific Screen Division is chosen, the corresponding amount of cameras will be displayed on the main screen.

| | | | |
|--|---|--|---|
| | Displays the first 4 available cameras in a 4-cameras Screen Division on the Main Display Screen. Click again to display next 4 cameras | | Displays the first 10 available cameras in a 10-cameras Screen Division on the Main Display Screen |
| | Displays the first 6 available cameras in a 6-cameras Screen Division on the Main Display Screen | | Displays first 13 available cameras in 13-cameras Screen Division on the Main Display Screen |
| | Displays the first 9 available cameras in a 9-cameras Screen Division on the Main Display Screen | | Displays the first 16 available cameras in a 16-cameras Screen Division on the Main Display Screen |
| | Rotate Cameras - This button continuously rotates cameras in the quad screen division (4-cameras screen division) in a sequence (1-4, 5-8, 9-12, 13-16, 17-20, 21-24, 25-28, 29-32 (if applicable)). To stop camera rotation, click the desired Screen Division button or click Rotate Cameras again to deactivate it. | | |
| | Full Screen - This button displays a single camera or chosen screen division without any menu bars (no interface shown). Right-click to exit the full-screen mode. | | |
| | Snapshot - This button allows taking a snapshot of each connected camera in the Live mode. Ensure that the Display Snapshot Button checkbox is checked off in the Server Information setup tab and the Snapshot Setup tab are properly configured. If the Snapshot Setup is not configured, the Snapshot button will become inactive. | | |

Note: The Screen Division buttons change on cursor-over and when selected. The red screen division button is the one currently activated

Virtual (On-Screen) Keyboard

Even though our systems come with a keyboard, it is possible to configure i3DVR Server Setup without using one. Every setup tab that requires some kind of user input has a virtual keyboard. The virtual keyboard icon is located on the bottom right corner of the setup tabs.



i³Server - Search and Playback

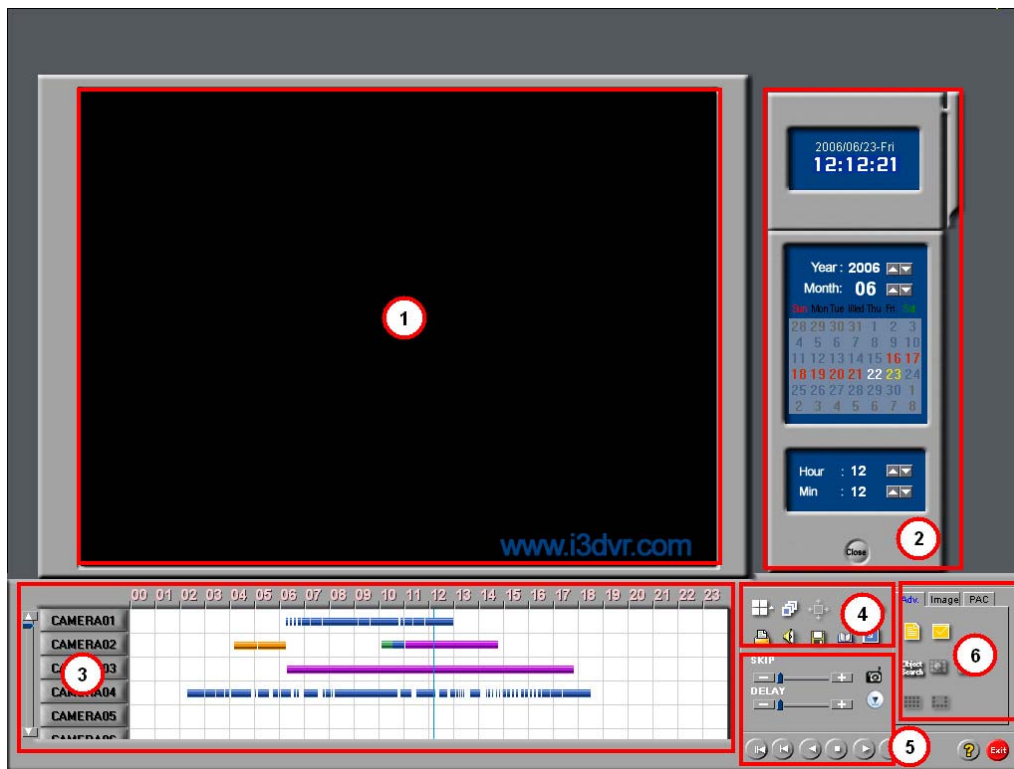
Search is one of i³Server's most used features. i³DVR technology provides an instantaneous search by time/date/camera and smart search - an exclusive feature not offered by VCR technology. The effective and easy search capabilities make DVR technology much more efficient as it eliminates hours of video screening- a task which is not uncommon with conventional VCR technology.

To browse through the recorded video, click on **Search** button on the main screen. The Search menu will pop up.



The main areas of the Search window are:

1. Display window
2. Time panel
3. Timeline bar
4. Tools panel
5. Playback Control panel
6. Advanced settings
 - a) Advanced search panel
 - b) Image settings panel
 - c) PAC panel

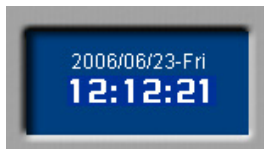


Time Panel



Clock

Browse through the 24-hour clock by scrolling the arrows up and down. Adjusting the time in this menu will move the time line marker on the timeline bar. In this example: the time line marker in the timeline bar is set to 12:12PM



Current Date and Time

Current **Date and Time** is obtained from the Windows Date/Time Properties. In this example: system time is June 23, 2006, 12:12:21PM



Calendar

Browse through the years and months by scrolling the arrows up and down.

Days highlighted in **red** are days for which there is recorded data.

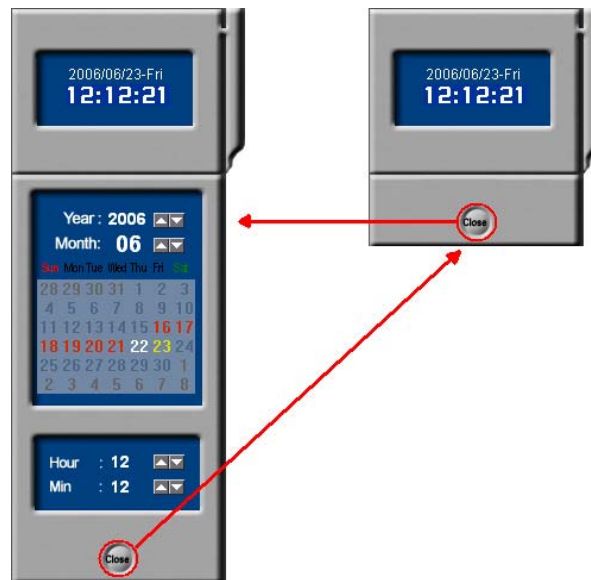
A day highlighted in **white** indicates a day selected for a search.

A day highlighted in **yellow** indicates the current day of recording.

In this example: There is recorded video data from June 16 – June 23, 2006. Video Recording for June 22nd is currently displayed in the timeline bar. The current day of the video recording is June 23rd, 2006.

Collapse the Time panel

To collapse the Time panel, click the **Close** button under the Clock window. The panel is reduced to the current Date and Time window. To expand it, click **Open**.



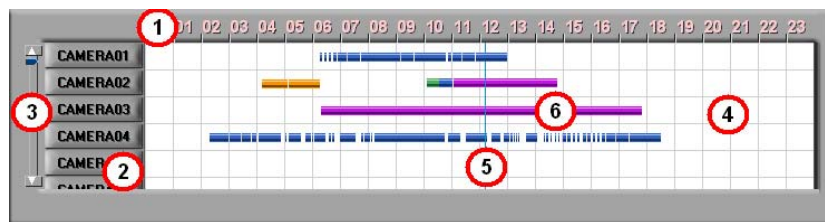
Timeline Bar

The timeline provides a visual representation of the recorded video data. The recorded data is represented by multi-colored bars. The color of the bar indicates the type of the video recording (motion, sensor, pre-alarm or continuous).

The timeline bar permits navigation through recordings made with different cameras, and to browse through a 24-hour clock.

The main areas of the Timeline bar are:

1. 24-hour timeline
2. Camera activation buttons
3. Camera scroll bar
4. Video recording area
5. Timeline marker
6. Video recording bars



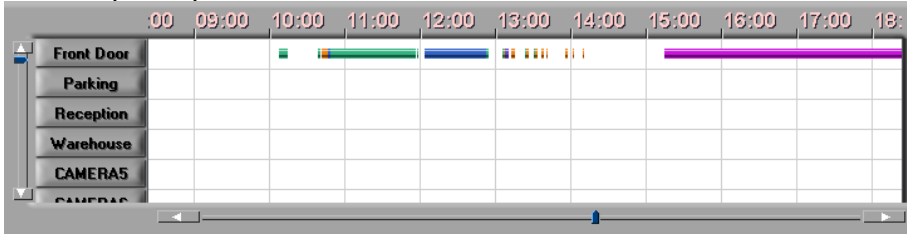
24-hour Timeline

This timeline represents a single day chosen in the Calendar. It can be expanded to simplify a search.

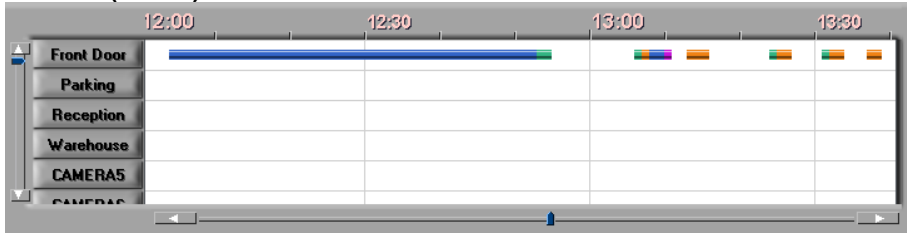
Left-click on the 24-hour time line once to expand it once, click twice to expand it twice.

Note: when expanded, the Timeline bar has both vertical and horizontal scroll bars. The vertical is used to browse through all available Camera Activation Buttons, the horizontal scroll bar is added to browse through the expanded 24-hour timeline.

Timeline (zoom1)



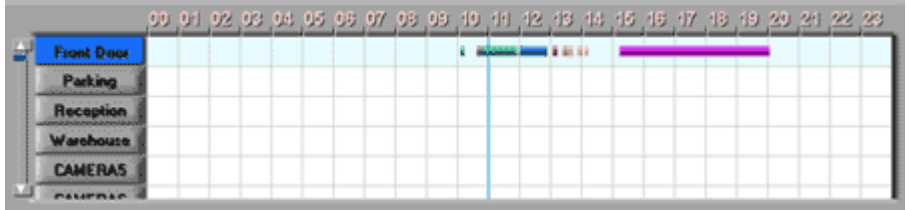
Timeline (zoom2)



Camera Activation Buttons

Camera Activation Buttons allow for a choice of specific cameras for each search. These buttons display camera custom labels as configured in the Hardware Setup.

To select a camera for a search, click on the Camera Activation Button. The selected camera will be highlighted in blue.



Camera Scroll Bar

Scroll up and down to see all the available Camera Activation Buttons cameras

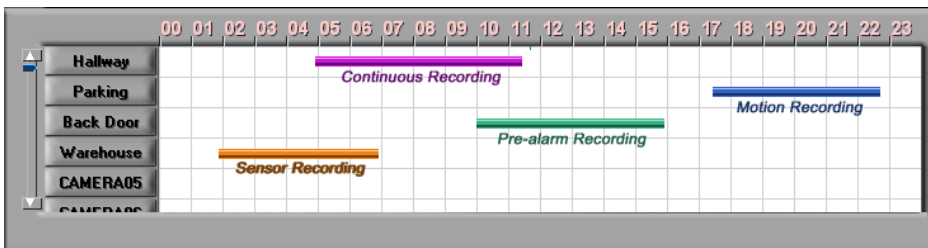
Timeline Marker

The vertical blue line is the Timeline marker that indicates the playback start time. In the example above, the Timeline marker is set to 11AM.

Video Recording Bars and Types of Recording

Multicolored bars in the white video recording area represent different types of recording.

- the pink bar indicates Continuous Recording
- the blue bar indicates Motion Recording
- the green bar indicates Pre-alarm Recording
- the orange bar indicates Sensor Recording



The timeline below indicates that the Camera 1 (Hallway) has recorded continuously from 5 AM to 11:30 AM. Camera 2 (Parking) has recorded based on motion detection from 5:30 PM to 10:40 PM. Camera 3 (Back Door) has recorded based on Prealarm from 10 AM to 3:50 PM. Camera 4 (Warehouse) has recorded based on sensor activity from 2 AM to 6:50 AM.

Playback Control Panel

Playback buttons are located on the bottom right corner of the Search Window.



- Skip to the beginning of the recorded data
- View previous frame
- Reverse playback
- Stop
- Play
- View next frame
- Skip to the end of the recorded data
- Real time - video is played back with the natural speed
- Snapshot - takes the snapshot(s) during the video playback

Skip – the playback will skip several frames at a time. The higher the Skip value, the more frames will be skipped during the playback

Delay – will slow down the playback. The higher the Delay value, the slower the video recording will be played.

Tools Panel



The Tools panel contains the following function buttons:

- Screen Division.** Click the **Screen Division** button to switch between 4, 9, and 16 screen divisions. Depending on the amount of chosen cameras, the **Search** window will display the appropriate screen division to accommodate all chosen camera inputs. (e.g. if 5 cameras are chosen, a 9-camera screen division will be displayed)
- Panorama.** Click the **Panorama** button to view the video segment frame-by-frame in the multiple screen division
- Expand.** Click the desired camera on the display screen during the playback and click the **Expand** button to enlarge the image to fit the display window
- Zoom In / Zoom Out / Drag**
Click the **Zoom** button to switch between the Zoom In, Zoom Out and Drag functions. The user can zoom in or out of a still image or video during playback and drag the enlarged image on the display screen.
- Refresh.** Click the **Refresh** button to refresh the timeline to display the recently recorded video.
- Print.** Click the **Print** button to print the still image on the connected printer.
- Audio Setup.** Click the **Audio Setup** button to mute/adjust the audio volume
- Backup.** Click the **Backup** button to save the video/still image on the local or remote media.
- Bookmark.** Click the **Bookmark** button to save the exact time of the video recording, so that it can be quickly located on the timeline later.
- Full Screen.** Click the **Full Screen** button to display a single camera, selected screen division or still image in the full screen mode with no Graphic User Interface (GUI)



Video recording playback

To playback the video recording in the Search mode, do the following:

1. In the Time panel, choose the date from the **Calendar** window
2. Set the time of the recording in the Time panel **Clock** window
or
2. Set the time of the recording by clicking inside of the timeline bar to set the timeline marker (the vertical blue line) to the start of the video recording to be played back.
3. Choose one or more cameras in the Timeline bar by clicking on the appropriate camera activation buttons. If no cameras are chosen for the search, the following warning window will appear:



Note: Depending on the number of selected cameras, the video recording will be displayed in a 4, 9 or 16-camera screen division.










4. Adjust the **Skip** and **Delay** parameters in the Playback Control panel. The higher the Skip value, the more frames will be skipped during the playback. Increase the Delay value to slow down the playback.
5. To start the playback, click the **Play** button .
6. To view a single camera in a 1-camera division screen: stop the playback , click the desired camera, resume playback .
7. To go back to the multiple-cameras screen division: stop the playback , click on the display screen, and resume playback .

Image Zoom In/Zoom Out

Note: The instructions below apply to video recordings in the playback mode and paused still images.

To zoom in/zoom out/drag enlarged image, do the following:


1. Select the camera
2. Set the start time in the **Clock** window or by clicking directly on the timeline
3. Start playback
4. Click the desired camera to display it separately in the display window
5. For a still image, stop the video recording by clicking the **Stop** button in the Playback Control panel 
6. On the Tools panel select the plus sign to zoom in  or minus sign to zoom out . To switch between zoom in/zoom out and drag buttons, click the **Zoom** button on the Tools panel.
7. Right-click on the video recording/still image to zoom in/out until the desired result is achieved. The video recording/image can be zoomed in digitally up to 17 times. Digital zoom refers to the pixelation of an image. This is not the same as optical zoom, which uses lens capacity to zoom in on a picture. Digital zoom changes the size of the image without affecting its resolution.
8. To drag the enlarged image, click the **Drag** button  on the Tools panel, click on the image, hold down the left mouse button and drag the image

Using the Bookmark

Much like regular paper bookmarks, bookmarks in the Server Search mode are used to mark specific instances in the video recording for quick access at a later time. The Bookmark function saves the date and start time of specific video instances in a single database, to simplify the search process later on.

Warning: The existing bookmarks only exist as long as the corresponding video recordings exist on the hard drive. Once the video recording is overwritten, the bookmark no longer works.


To use the bookmark, do the following:

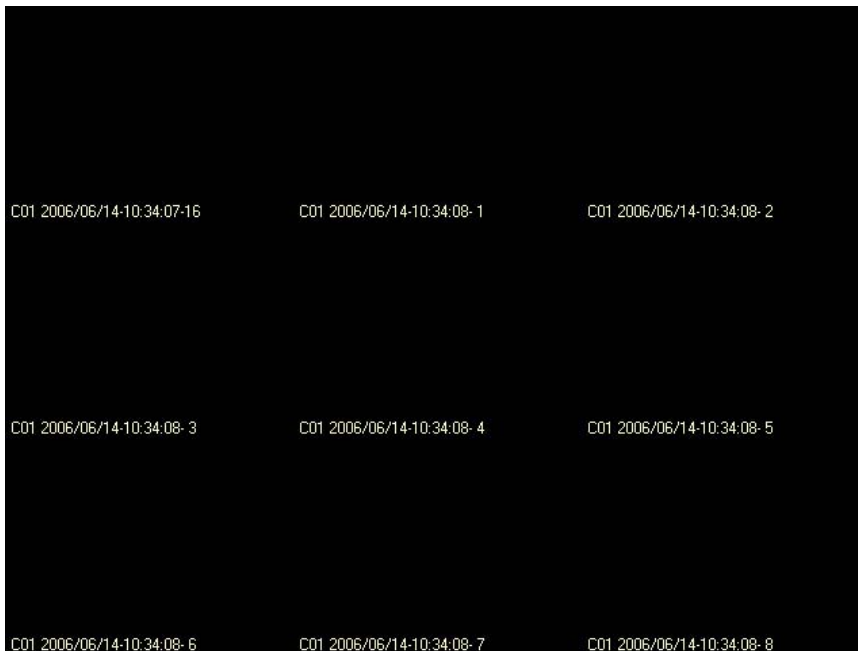
1. Select the date of the recording in the **Calendar** window
2. Set the start time in the **Clock** window or by clicking directly on the timeline
3. Click the **Bookmark** button on the Tools panel 
4. Click **Add**. The set time and date will be automatically added the bookmark database.
5. Enter the Bookmark description. E.g. below: Friday Night, Closing Time, etc. Use the regular keyboard or the virtual keyboard provided by the i³Server.
6. To locate the bookmark on the time line, click **Go To**. The Time line marker will jump to the specified time on the Timeline Bar.
7. To delete a bookmark, select it in the list and click **Delete**
8. To delete all bookmarks, click **Delete All**
9. To close the **Bookmark** window, click **OK**


Panorama function

The panorama function can be used to view the video recording frame-by-frame in the selected screen division. This can be done to see the motion progression, count the number of frames in a second, etc.


To use the Panorama function, do the following:

1. Select a camera
2. Set the start time in the **Clock** window or by clicking directly on the timeline
3. Click the **Panorama** button  on the Tools panel



4. Select the desired screen division: 4, 9 or 16. (the number of frames to view on the display screen at one time) 
5. Adjust the Skip/Delay parameters in the Playback Control panel. Start playback by clicking the **Play** button

OR

5. Click the **Next Frame**  button to display each consequent frame in the next screen division

In this example, Camera 1 is displayed on nine screens in the 9-screen division Panorama mode. The Screen division shows 9 consequent frames starting at 10:34:07 (frame 16) and ending at 10:34:08 (frame 8) on June 14, 2006.

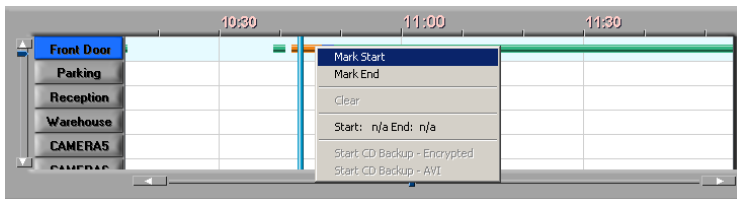
i3Server - Quick Backup

Quick CD Backup allows quickly saving a portion of the video recording onto the CD-R in either the Encrypted or AVI format. **Note:** Quick CD backup is available on **CD-R/DVD-R** only. Please avoid using CD-RW due to the lengthy formatting process.

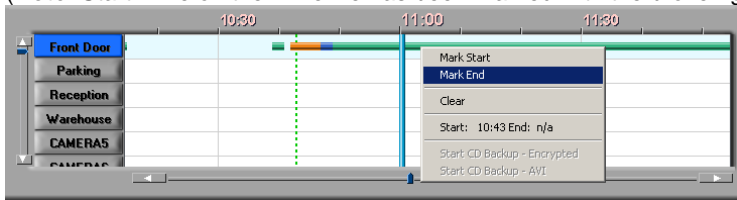
Each CD-R/DVD-R may be used several times until the media is full.

To perform a Quick Backup, do the following:

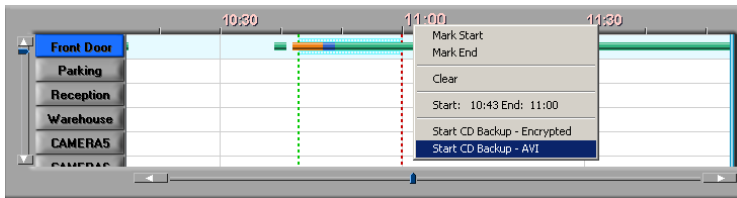
1. Ensure that there is enough free space on the C drive – at least 650MB should be available
2. Insert a blank, unformatted CD-R into the CD-R drive
3. Select one or more cameras
4. Set the start time in the **Clock** window or by clicking directly on the timeline
5. Right-click on the data area of the Search Bar: the context menu will appear. Select **Mark Start** to choose the start time.



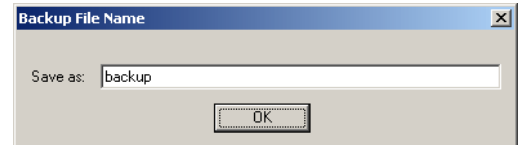
6. Set the end time in the **Clock** window or by clicking directly on the timeline
7. Right-click on the data area of the Search Bar. The context menu will appear. Select **Mark End** to choose the end time. (**Note:** Start Time on the Timeline has been marked with the broken green line)



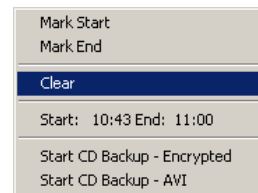
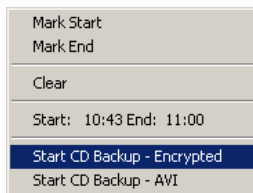
8. Right-click and select **Start CD backup–AVI** to backup in AVI format. (**Note:** End Time on the Timeline has been marked with the broken red line; the segment of the recording between Start and End time lines has been highlighted in blue)



9. When backup in AVI format, enter the name for the AVI file.



10. To backup in encrypted format, choose **Start CD backup–Encrypted** in the context menu.
11. To clear the Start and End times for quick backup, click **Clear** in the context menu.



Multi-CD functionality

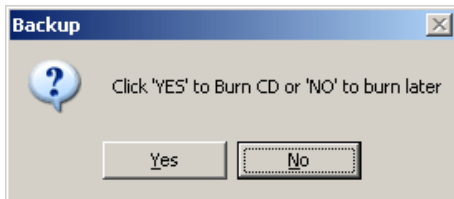
When CD-R is not available, the completed backup can be temporary stored onto the harddrive to be recorded onto a CD-R at a later time.

Multi-CD function allows saving multiple backup processes onto a single CD-R, thus reducing the number of CD-Rs used.

This feature works for both **AVI** and **Encrypted** backups. It can be performed either through **Manual Backup** or **Quick Backup** in the Search mode. Multi-CD Backup allows temporary saving the Encrypted/AVI backup files onto a hard drive and makes it possible to burn them on a CD-R at a later time without accessing the Desktop.

In order to perform the Multi-CD Backup, the user should do the following:

1. Access the Search mode
2. Configure Manual/Quick Backup: Start/End Time, Encrypted/AVI
3. Choose a CD-R as a destination media.
4. Start Backup. Wait for the following window:



5. Click **No** to temporary save the current backup onto the hard drive.
6. The following buttons will appear in the Search Window:



The **Del. Backup** button allows deleting all backup processes temporary saved onto the hard drive.
The **Burn CD** button allows burning all backup processes temporary saved onto the harddrive onto a single CD-R. Keep in mind, however, that the total size of the temporary backups should not exceed the size of the CD-R.

7. The user may exit the Search mode. The same **Del. Backup** and **Burn CD** buttons will be displayed on the Main Screen.

i³Remote

Before connecting to a remote site, please ensure the following:

1. The following minimum hardware specifications are met: (PIII 500 MHz; 128MB RAM; 32MB AGP video; Windows 98/2000/XP).
2. The same versions of i³Server and i³Remote are used.
3. The remote i³Server is on. The correct type of connection and Live Video Stream Bandwidth are set in Communication Setup.
4. The correct type of connection is set in i³Remote – Communication Setup.

Creating a New Remote Site Connection

To create a new Server connection, do the following:

1. Click on the **Connections** button on the main screen
2. In the **Server Connect - LAN** window, click on the **Add** button
3. The **Insert to new site** window will appear.



4. Choose the group to which the new connection will be established
 - a) Choose the existing group from the drop-down menu
 - b) To add a new group, click the **Add Group** button and Enter the name of the new group. Click **Ok**.

5. Enter **Server ID** – a maximum of 7 alphanumeric characters. This must match the remote Server ID as entered in the Server Information Setup.
6. Enter a **Server Name** – a descriptive name for the server. E.g. "toronto office"
7. Enter the **Server IP Address**. This must match the remote Server IP Address. Unless the i³Server has a static IP Address or a Dynamic IP domain service, the remote connection will not be established.
8. Check the **Connect when system starts** checkbox to connect to the site automatically every time the i³Remote software loads.

9. Enter the **User Name** and **User Password**. When trying to connect to the remote server, the system will check the **Server ID**, **User Name** and **User Password** together. If either of the variables is incorrect, the Remote software will not be able to connect to the site
10. Click **OK** to save the new connection, or click **Cancel** to close the new site setup window without saving.
11. To delete an individual site, choose it in the Connections list, and click the **Delete** button
12. To delete the entire group, choose the group from the list and click the **Delete** button. Click **Yes** in the window to delete the group.
13. When information for the new site is completed, it will appear in green font in the **Server Info** window on the Main Screen.

PAC Data Manager End User Guide

PACDM™ is used in conjunction with i3DVR Server. Its primary purpose is to allow POS, ATM or Card Access systems integration with i3DVR software. The integration with a third party product permits collecting the data received from the external system (e.g. POS) and overlaying this data on the live video in i3DVR Server. The collected data can later be searched and analyzed in real time.

PACDM™ allows:

- Quick Search based on Item Description, Item Price, and Time Interval
- Creating different graph/table reports from the collected data
- Exporting data to a printable file format or to other data file formats
- Local and Remote access

Hardware and software pre-requisites for installation

The following i3DVR Series products are certified for use with PACDM™ software: Lite 3006; Lite 12006; 12016 SRX Series (with the exception of the Compact); 48032 SRX Series

1. SPK key to activate PACDM™ software
2. Needed for serial integration:
 - a. Specific cables for POS, ATM or Card Access
 - b. COM port or SIIG card available
 - c. Data Feeder Cable if running a Demo Installation
3. Needed for TCP/IP integration:
 - a. Available Ethernet connection
4. A minimum of **20GB of free space** is required on the **D:** drive for database storage
5. A minimum of **512MB** RAM
6. Minimum processor speed - **Pentium 4 - 1.8GHz** or higher
7. Windows XP Professional or Microsoft Windows 2000 with Service Pack 4 or higher

PACDM™ Quick Item Search

Once the data from the third party product (e.g. POS) is collected, the PACDM™ allows the quick search by item description and/or price based on the specific time interval.


The screenshot shows the PAC Data Manager application window. The 'Quick Search' tab is active. The search criteria are set to 'Item description' and 'Item price'. The search interval is set to 'Today'. The search results table is displayed below the search criteria.

| | | Transaction No | Item Description | Item Price | Trans Date | Trans Time |
|---|---------|----------------|------------------|------------|------------|------------|
| ▶ | Details | 160998 | Grocery | \$1.19 | 11/18/05 | 06:45:19 |
| | Details | 160998 | Grocery | \$2.29 | 11/18/05 | 06:45:19 |
| | Details | 160999 | Large Coffee | \$0.99 | 11/18/05 | 06:48:47 |
| | Details | 160999 | VOID | (\$0.99) | 11/18/05 | 06:48:47 |
| | Details | 161000 | 16 Oz Refill | \$0.39 | 11/18/05 | 06:48:58 |
| | Details | 161000 | ** CLEAR ** | \$0.00 | 11/18/05 | 06:48:58 |
| | Details | 161000 | Grocery | \$0.79 | 11/18/05 | 06:48:58 |
| | Details | 161001 | Large Coffee | \$0.99 | 11/18/05 | 06:49:23 |
| | Details | 161001 | Non Tax Grocery | \$0.50 | 11/18/05 | 06:49:23 |
| | Details | 161004 | Grocery | \$2.89 | 11/18/05 | 07:00:33 |

1. To search for a particular item, set the time interval for the search
2. To narrow the search down based on item description, check **Item description** checkbox and select the items of the interest in the list box below (e.g. 16 OZ REFILL). Check **All** to view all available items within the selected time frame.
3. If desired, limit the search even further by checking the **Item price** checkbox and setting the price parameter
4. Click the **Start search** button to search the database. The matching results will appear in the lower half of the screen in a grid format.

Quick Item Search Results

Within the grid, the following information is available for each result returned by the search:

1. Access to the exact moment in the video recording that corresponds with the specified item. By clicking on the camera icon,  the user will be able to view the available video frame with the text overlay with the chosen item.
2. Transaction number, Item Description, Item Price, Transaction Date and Transaction Time
3. Access to the detailed transaction description. By clicking the **Details** button, the list of returned items will be displayed in the Search Results tab, which gives access to the Simple, Structured and the Receipt view of full transaction details for each specific item.

Search results – Simple view

| Transaction details: Simple view | | | | | | | | |
|----------------------------------|----------------|------------|------------|----------|--------------|-----------|-------------|-----|
| | Transaction No | Trans Date | Trans Time | DVR Date | DVR Time | Camera No | Employee ID | R |
| | 160998 | 11/18/05 | 06:45:19 | 11/18/05 | 16:10:27:843 | 1 | (null) | (n) |
| | 160998 | 11/18/05 | 06:45:19 | 11/18/05 | 16:10:27:843 | 1 | (null) | (n) |
| | 160999 | 11/18/05 | 06:48:47 | 11/18/05 | 16:10:28:000 | 1 | (null) | (n) |

Search results – Receipt view

| Transaction details: Receipt view | | |
|-----------------------------------|-------------------|--------------|
| | Transaction No | 160998 |
| | 0 Grocery | \$1.19 |
| | 1 Grocery | \$2.29 |
| | Method of Payment | Cash |
| | GST | \$0.00 |
| | PST | \$0.00 |
| | Sub Total | \$0.00 |
| | Total | \$3.76 |
| | Payment Amount | \$5 |
| | Change | \$1.24 |
| | Trans Date | 11/18/05 |
| | Trans Time | 06:45:19 |
| | DVR Date | 11/18/05 |
| | DVR Time | 16:10:27:843 |
| | Camera No | 1 |
| | Employee ID | |
| | Register ID | |
| | Shift ID | |
| | Card ID | |

Search results – Structured view

| Transaction details: Structured view | | | | | | | | |
|--------------------------------------|-------------------|----------------|-------------|-----|-----|------------|--------|--------|
| Item Quantity | Item Price | Item Descripti | | | | | | |
| 1 | 1.19 | Grocery | | | | | | |
| 1 | 2.29 | Grocery | | | | | | |
| | Transaction Total | Sub Total | Method of P | GST | PST | Payment Am | Change | Trans |
| | 160998 | 3.76 | Cash | | | 5 | 1.24 | 11/18/ |

i³ Online Training

i³DVR is pleased to announce that i³ Online Training is now available to Dealers and End Users.



Over the past few months the training staff at i³DVR has worked very hard in order to meet the demands of end users and technicians, who wanted to learn about our product lines.

However, some demands could not be met due to the physical distance between the students and the facilitator. This Online Training Course will allow students to learn about i³ products:

software and hardware over the Internet, anytime, anywhere.

Users need little knowledge of the CCTV and DVR industries to take this course. i³ Online Training is available to both end-users and dealers, certified and non-certified. All users and dealers must be registered to be able to participate in i³ Online Training.

End-users can access the following courses:

- Level 1: CCTV Cameras
- Level 2: DVMS Hardware
- Level 3: Certified User
- PACDM™ Manual
- End User Manual
- DVMS Basic Instruction Manual

Dealers can access the following courses:

- Level 1: CCTV Cameras
- Level 2: DVMS Hardware
- Level 3: Certified User
- **Level 4: Authorized Technician**
- **Level 5: Master Technician**
- PACDM™ Manual
- End User Manual
- DVMS Basic Instruction Manual
- **i³DVR Tech News releases**

The i³ Online Training Course provides basic CCTV Camera training, as well as thorough training in DVR Technology and i³ proprietary software. Students will have access to different levels of the course depending on their status.

End-users

End-users will benefit greatly from new knowledge about the security world. The Online Training course is an invaluable tool for students willing to enhance their knowledge about i³ proprietary software. It will improve their user skills, helping them to protect their assets and safety.

Dealers:

Non-certified dealers: (Novice, Experienced)

With the i³ Training Course readily available online, certification with i³DVR just got easier! Now dealers can get i³ Certification on their own time and in a home or office environment.

Certified dealers:

The i³ Online Training Course can be used as an online reference tool by previously certified dealers, including dealers certified online.

Course Description:

Level 1: CCTV Cameras

This course consists of basic information on CCTV Camera technology. The information contained in this course may help students to make the right decisions in choosing the proper equipment for their application. This course is a pre-requisite for all dealers seeking i³ Certification.

Level 2: DVMS Hardware

This course gives valuable insight into the functioning of DVMS (Digital Video Management Systems) as well as the terminology used in the security industry. This course is a pre-requisite for all dealers seeking i³ Certification.

Level 3: Certified User

This course has been especially designed for students that want to learn about basic usage of our i³DVR Server and Remote software. i³DVR strongly recommends this course for the following end-users: managers, owners, loss-prevention officers, and security personnel. This course is a pre-requisite for all dealers seeking i³ Certification.

Level 4: Authorized Technician

This course provides in-depth training in the i3DVR Server and Remote software. Students graduated from this level will be certified as i3 Authorized Technicians and the certificate will be mailed to them. i3 Certification will be granted with a passing grade of 80% and will permit the technicians to service i3DVR Servers without voiding the factory warranty. The pre-requisites for this course are the successfully passed tests for the Levels 1-3.

Level 5: Master Technician

And finally, the Level 5 Master Technician course is only available to i3 Certified dealers. At this level students are expected to be experts in i3DVR technology. Critical aspects of the i3DVR Server, Remote, PACDM™, and any new features and issues will be thoroughly examined.

Registering for the course

1. Go to www.i3onlinetraining.com
2. Click on “[Register for an account](#)” link (Fig. 1)
3. Fill out the online training registration and click **Register** (Fig. 2)

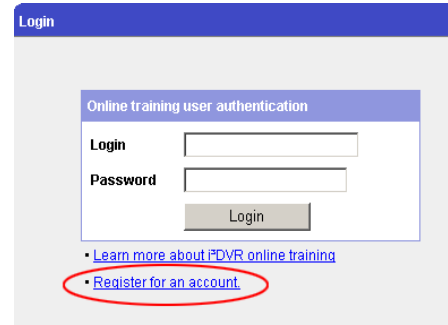


Fig. 1 – Login Window

Fig. 2 – Online Training registration form

- Fill out your **Company Name**
- Please provide the **contact phone number**
- Please provide **valid email address**
- Please provide your **office address**. This address will be used to mail your certificate
- Choose the **User Type** most suitable for you:
 - **End User.**
No activation required. Partial access to site
 - **Novice/Experienced Dealers.**
Activation required. Full access to site.
- Fill out your **Sales Rep. Company Name** (i3DVR International or company you are dealing with directly)
- Enter the **Login** name and **Password** of your choice

4. Once the registration is submitted, it usually takes up to **2 business days** for your account to be activated by the administrator. A confirmation email will be sent to the address you have provided in

your registration.

With any questions regarding i3 Online Training please contact administrator by email: i3onlinetraining@i3dvr.com