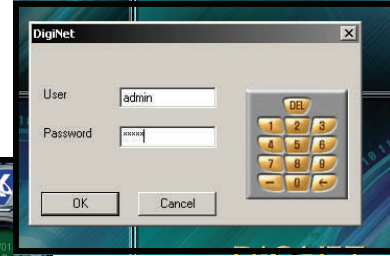
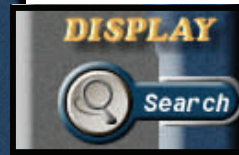


# Video Backup Walkthrough

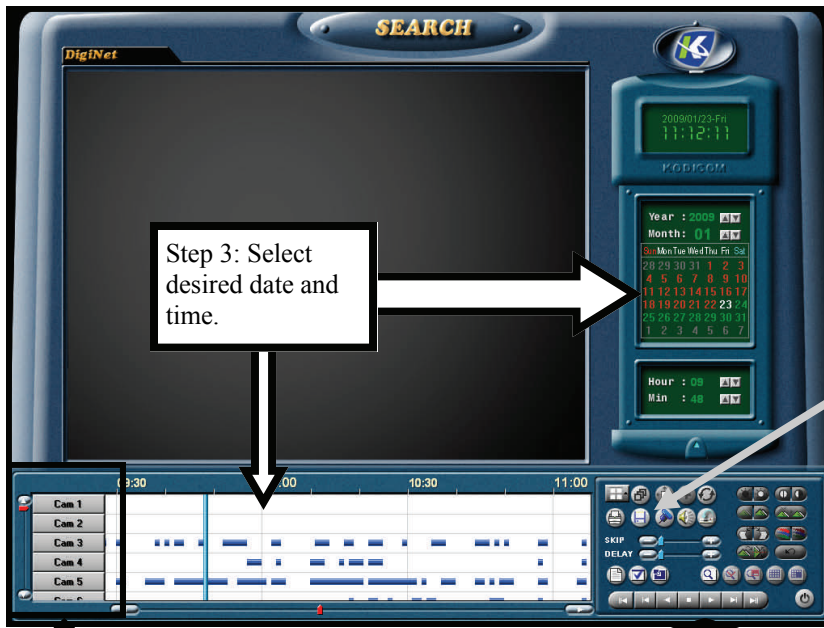
*DigiNet: 4.11, 4.13 and EXL: 5.2*



**Step 1:** Login to the DVR.



**Step 2:** Click on the search button.

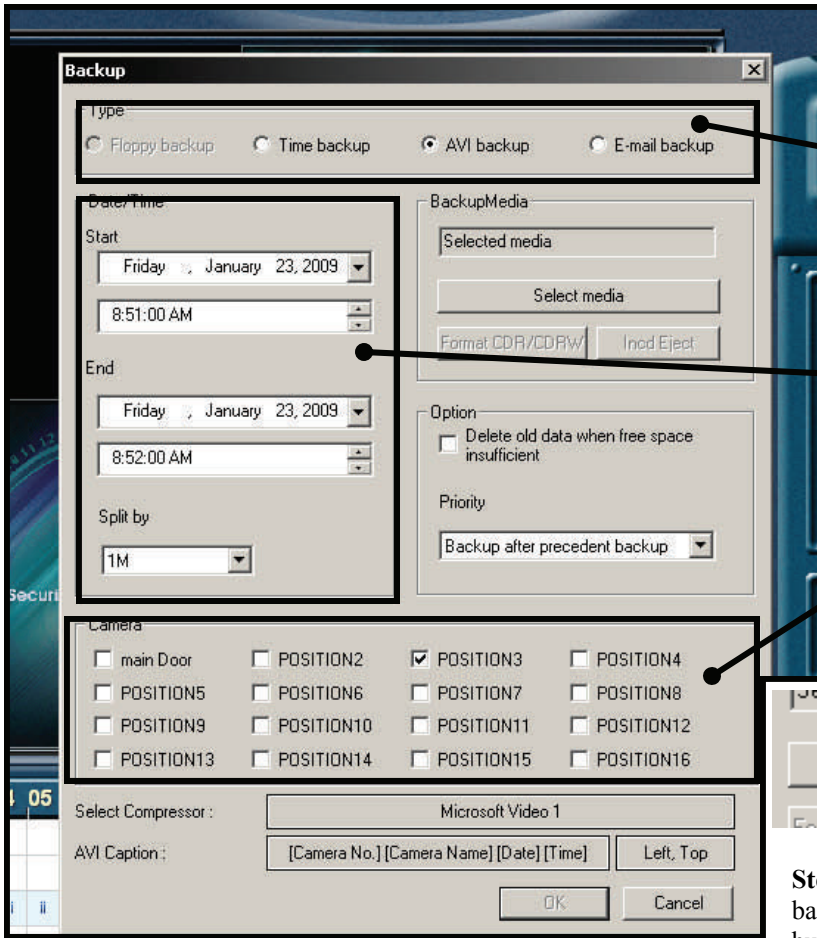


**Step 3:** Select desired date and time.



**Step 4:** Once desired time is selected click the save but-

*Note: To view cameras in search the desired cameras must be toggled on or off by selecting the appropriate camera box. Playback of video is controlled buy the video control bar located on the right.*

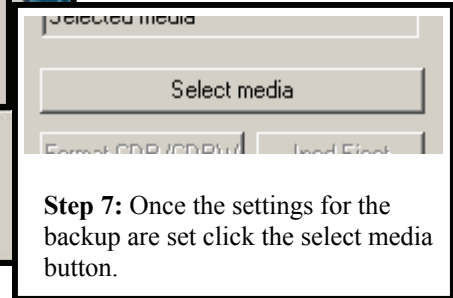


**Step 6:** Set backup settings.

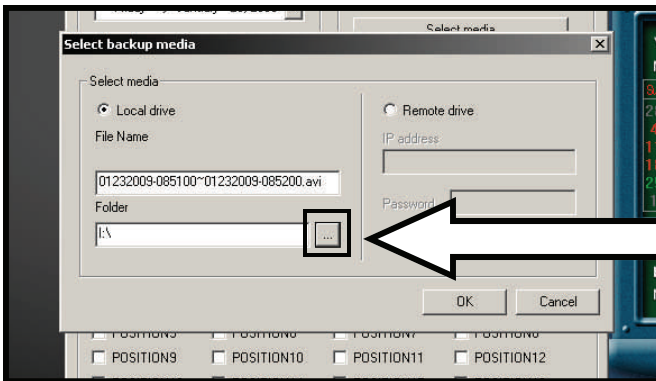
*A:* Select AVI backup.

*B:* Set Start and End time of the desired video.

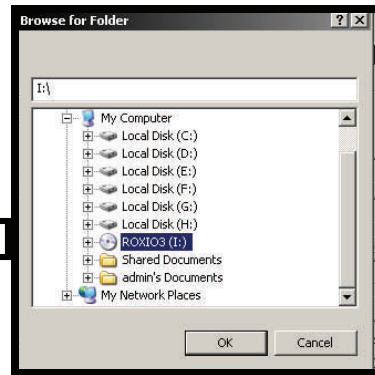
*C:* Select desired cameras.



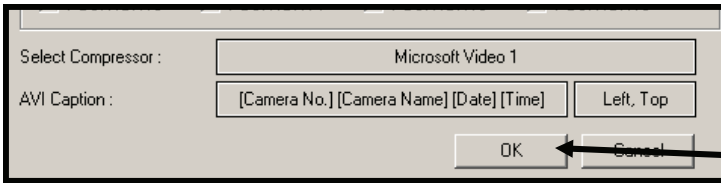
**Step 7:** Once the settings for the backup are set click the select media button.



**Step 8:** When the “Select Backup Media” window appears. Check to make sure that “Local Drive” is selected then click on the box with 3 dots (...).

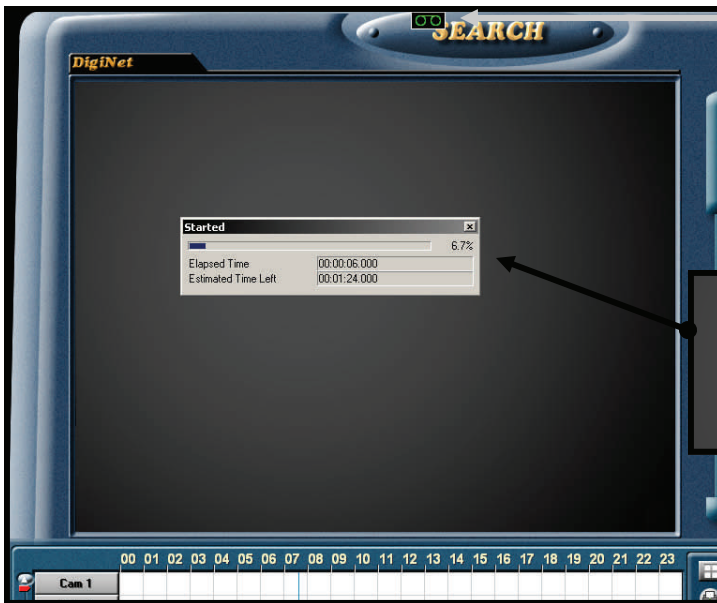


**Step 9:** Check to make sure that there is writable media in the optical drive. (ie: CD-R or DVD-R) Select the optical drive from the list. Click OK.

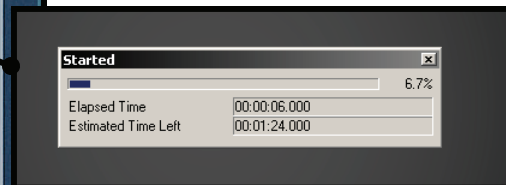


**Step 10:** You will be returned to the “Backup” window. Click “OK” to commence the backup.

**Step 11:** When the backup starts a small REC icon will appear at the top of the search page indicating the backup is in progress.



*Note: Double clicking on the REC icon will bring up a progress bar for the current backup session.*



**Step 12:** Once the Search screen shows no REC icon or progress bars the screen can be closed using the button in the bottom right corner of the screen.



**Step 13:** The disk can now be ejected from the DVR. Press the eject button on the cd drive only once and wait for the burn to complete. This could take some time wait till the green light stops and the disk ejects.

